



EDUCATE
COLLABORATE
INNOVATE

RHODES STATE COLLEGE

MAJOR GIFTS CAMPAIGN

Dear Friends of Rhodes State College,

Educate. Collaborate. Innovate. These three words hold immense meanings on their own. To educate students opens doors that forever change their lives and the lives of those they serve. To collaborate fosters partnerships that strengthen and enrich projects and programs. To innovate captures and materializes ideas that move us forward with spirit and ingenuity.

When combined, these three words form the pillars of the Educate, Collaborate, Innovate campaign to create the Borra Center for Health Sciences in downtown Lima and the Emerging Workforce Innovation Center at Rhodes State College. It has been a true community effort from the start, and your participation is vital to help turn this vision into reality.

With a planned completion date of June 2021, the Borra Center for Health Sciences will be home to five of the College's Health Science programs. The Center's design incorporates cutting-edge technology and equipment our region's students need to learn and advance in their healthcare careers. The design also promotes interdisciplinary education, the ability to connect with other health serving organizations and vast training opportunities for area incumbent healthcare professionals.

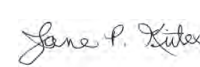
The Emerging Workforce Innovation Center at Rhodes State is equally exciting as area business and industry leaders help establish the focus for the future of education at Rhodes State. This Innovation Center will be dedicated to the business and industry workforce needs of today and adaptable to the workforce needs of the future. It will be a space where ideas do materialize with spirit and ingenuity.

In 2018, Rhodes State College provided \$164 million of economic impact to the region through its operations and alumni. With over 18,000 alumni, most of whom live and work in northwest Ohio, Rhodes stands ready for the next 18,000 alumni who will elevate and grow our region. We extend our invitation to you to join us in this transformational change.

Sincerely,



Matthew T. Jennings, Co-chair



Jane P. Krites, Co-Chair



Our modern society requires that we educate those Ohioans who want to acquire the special skills so important to meeting today's needs.

*James A. Rhodes
Governor of Ohio 1963-71*

CELEBRATING OUR HISTORY

Rhodes State College changes lives, builds futures and improves communities through life-long learning.

Founded in 1971 as Lima Technical College, Rhodes State College was created from a vision to provide technical training to the citizens of the region. From past to present, it lives that vision with a 10-county service area offering over 70 degrees and certificates. Rhodes State provides a personal experience and a rewarding education for students while supporting and enriching the lives of those within our communities.

The 2018 Economic Impact Study validates that the College provides social and economic growth including its service to business and industry in the region. This 50-year tradition of excellence makes Rhodes State a pillar in our region and creates opportunities for continued and expanded community partnerships.

ANNUAL ECONOMIC IMPACT OF RHODES STATE COLLEGE

	OPERATIONS IMPACT	STUDENT IMPACT	ALUMNI IMPACT	TOTAL IMPACT
ADDED INCOME	\$23.5 Million	\$3.2 Million	\$137.2 Million	\$164 Million
JOBS	552	66	2,102	2,719

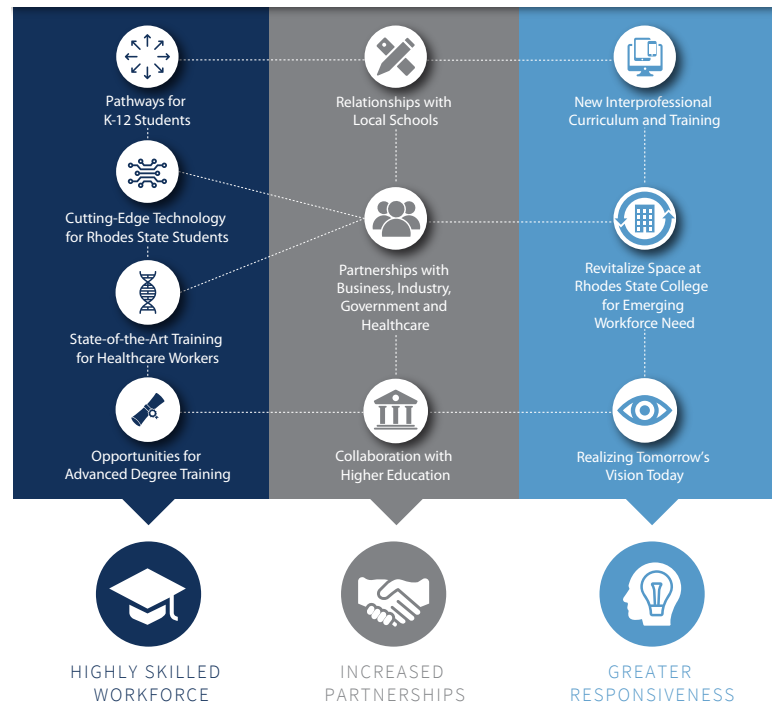
Source: The Economic Contribution of Rhodes State College 2018

STRENGTHENING AND GROWING PARTNERSHIPS

Rhodes State College plays a key role in helping students increase their employability and achieve their individual potential through degree programs, certifications, apprenticeships and industry training. It provides students with the education and skills they need to have fulfilling and prosperous careers.

Through curricular advancements and growing partnerships, Rhodes will continue to educate and revitalize our region. With 87% of our alumni remaining in the region, a commitment to Rhodes State is a commitment to our region's prosperity.

EDUCATE



RHODES STATE WILL:

- Provide awareness and access to state-of-the-art education which equips current and future employees to face rapidly-shifting changes in today's workforce.
- Collaborate toward inclusive opportunities for students with varying academic achievements to promote diverse, regional employment opportunities across all sectors.
- Create innovative partnerships and curriculum to maximize institutional resources which will benefit our students.



BUILDING FUTURES, CHANGING LIVES

Rhodes State is building upon its tradition of excellence in higher education while continuing its contribution to the economic vitality of our region. Revised and expanded curriculum, in response to employment needs in our communities, have led to a collaborative initiative to provide access to the most state-of-the-art education available.

To strengthen regional economic prosperity, our partners in healthcare realize their current and future employees will benefit from an educational facility which effectively creates a pathway directly from the identification of a career to viable employment.

Our business and industry partners also know their current and future employees need the same educational opportunities to sustain and grow their businesses.

Rhodes State will meet these goals by the creation of the Borra Center for Health Sciences in downtown Lima and the Emerging Workforce Innovation Center at Rhodes State College.



*Rhodes State [Lima Tech]
was the turning point in my life
that gave me a vision and skills
to serve my community in a hands-on way.
It launched an exciting and fulfilling career that has
continued over four decades and allowed me to
touch tens of thousands of lives at home
and around the world.*

*Tim Mosher
Nurse Practitioner/EMT-P, Mercy Health St. Rita's
EMT 1982 and Nursing 1984
2015 Rhodes State College Outstanding Alumni Award
2016 Ohio Association of Community Colleges Distinguished Alumnus*

BORRA CENTER FOR HEALTH SCIENCES

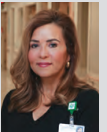
The Borra Center for Health Sciences will be in the heart of downtown Lima near major healthcare providers. This Center will allow Rhodes to respond to the needs of its healthcare partners by expanding accessibility to enhance incumbent worker and student experiences and by appealing to potential Rhodes State students who are bound for healthcare careers in our region.

The 50,000 square foot Center will be home to five of the College's Health Science programs: Nursing, Emergency Medical Services, Occupational Therapy Assistant, Physical Therapist Assistant and Respiratory Care.

The Center's design promotes interprofessional teaching and learning opportunities in a realistic healthcare environment. With 8,000 additional square feet of classroom space for the Health Science programs, the Center will provide student spaces that encourage group and individual learning and the finest technology available. Adjacent to the grand lobby, the Center features a room housing an interactive video wall for student collaboration and lessons, while having the ability to connect Rhodes State students to other colleges and healthcare providers for enhanced experiences.



During my time at Rhodes, I earned two degrees – one in Respiratory and one in Nursing.



The experience and time that I spent at Rhodes (LTC) provided me with a strong foundation for my healthcare career; it was the knowledge that I received and the experiences that I had while at Rhodes that have truly helped to shape me into the healthcare professional that I have become. Today, I proudly serve as the Chief Nurse Executive at Lima Memorial Health System and have earned my Baccalaureate, Masters and Doctoral degrees in nursing.

*Ann Pohl, DNP, RN
Vice President of Patient Care Services and
Chief Nursing Officer, Lima Memorial Health System
Respiratory Care 1989 and Nursing 1995*

TECHNOLOGIES THAT LEAD

The Borra Center for Health Sciences will incorporate cutting-edge technology and equipment which will transform the delivery of education for students and training for regional healthcare professionals:

- 3D Anatomage virtual simulation tables
- Nine-panel MultiTaction collaborative video wall
- Four clinical simulation suites – Medical-Surgical, Obstetrical, Surgical and Emergency/ICU – with high definition patient simulators, four dedicated debriefing rooms and a central control room
- Open ambulance simulator capable of simulating road conditions
- Home-care lab for physical and occupational therapy
- 12-bed nursing lab
- Four-bed respiratory care lab



The Anatomage Table is 85.1% more effective than a cadaver-based lab experience.



Rhodes State College will be one of four colleges in the country to connect the Anatomage tables with the MultiTaction wall. This greatly expands the number of students who can concurrently use the equipment for multiple lessons and allows Rhodes students to connect with healthcare facilities or other colleges around the country.





Greater Lima Region, Inc. fully supports the Emerging Workforce Innovation Center at Rhodes State. Having a highly skilled workforce is key to attracting business and industry to our region, and we applaud Rhodes State for their forward-thinking efforts in support of local employers. GLR looks forward to assisting Rhodes State as they continue to play a leading role in workforce development.

*Doug Olsson, President/CEO
Greater Lima Region, Inc.*

EMERGING WORKFORCE INNOVATION CENTER

Opening the Borra Center for Health Sciences reveals opportunities to reenergize space and establish the Emerging Workforce Innovation Center at Rhodes State College. The Innovation Center will be dedicated to emerging and current business and industry workforce needs.

The process to create the Emerging Workforce Innovation Center involves listening to partners to plan the scope of the needed educational programs, technology and equipment. During the spring of 2020 a survey was conducted with area business and industry leaders. They shared their thoughts on how Rhodes State can help them secure future employees, train current employees and be responsive to rapidly changing needs. These conversations will continue as the Innovation Center becomes a reality.

2020 BUSINESS AND INDUSTRY SURVEY COMMENTS

"Do you need an education? Absolutely. But it can and should look different... Rhodes should repurpose the space to fit those different needs."

"Let's provide pathways that give students multiple opportunities to determine what's best for them."

"Rhodes is looked at as a cornerstone in the community."





I find great fulfillment with my career knowing that I get to help people in our community

achieve independence and live their lives to the fullest following several types of injuries, illnesses, or accidents. I can honestly say that without the background that Rhodes State prepared me with, I would not have been able to grown into the practitioner that I am.

Brittany Patterson, Occupational
Therapy Assistant 2015
Mercy Health – St. Rita's

ONGOING COMMITMENT

The Rhodes State College Foundation, established in 1978, is a 501(c)3 non-profit which, through the financial support of individuals, corporations and foundations enhances the Rhodes State experience for our students. The Rhodes State College Foundation is committed to responding to the needs and challenges of Rhodes State by seeking funding partnerships to ensure scholarship support, programmatic support and capital support.

With a growing scholarship program that has awarded over \$2.2 million to students over the past twenty years and two successful capital campaigns in its history, the Rhodes State College Foundation assures donors that their gifts to the Educate, Collaborate, Innovate campaign will be used to strengthen the lives of many individuals, families and communities for generations to come.

RHODES STATE COLLEGE FOUNDATION BOARD OF DIRECTORS

Mr. Matthew T. Jennings, Chair

Mr. Richard P. Kortokrax*, Vice Chair

Ms. Mary Elmquist-Lane

Ms. Teri Hirschfeld

Ms. Jane P. Krites*

Ms. Alberta M. Lee

Ms. Carrie Jones Lewis

Dr. Francis O. Oruma

Dr. Jan L. Osborn

Dr. Ann Pohl*

Bishop Darnell K. Williams, Sr.

*Alumni

INVITING YOUR SUPPORT

We are inviting you to partner with us in the Rhodes State College \$8 million Educate, Collaborate, Innovate campaign. Your gift will help secure the future of these facilities, including cutting-edge technology, equipment and interactive spaces, demonstrating your commitment to our region's education and growth.

AN INVESTMENT IN RHODES STATE IS AN INVESTMENT IN OUR COMMUNITIES



87%

Rhodes State Alumni
who live and work in the region



97%

Rhodes State Alumni
who live and work in Ohio



RHODES STATE COLLEGE BOARD OF TRUSTEES

Ms. Jane Krites*, Chair

Mr. Douglass S. Degen*, Vice Chair

Mr. Everett "Butch" Kirk III

Dr. Wilfred G. Ellis

Mr. Sam Bassitt

Mr. John Paradore

*Alumni

FROM THE PRESIDENT

In my 22 plus years with Rhodes State, I have worked for three of the College's presidents. The mentorship from each of these Presidents and increasing administrative leadership opportunities, including leadership positions during two of the College's reaccreditations, seasoned me to lead the College today. While the history of Rhodes State is vitally important, it is its future and great potential that drives me. The opportunities we embrace today will provide the space, technology and collaboration needed to educate our regional workforce for decades to come. It is our collective responsibility to secure this investment.

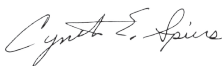
The pillars of this campaign – Educate - Collaborate - Innovate – tell the story of what lies ahead for higher education. A 21st century workforce needs knowledge, certainly, but the strength of our success is centered in our ability to collaborate and innovate. We need employees who are agile, can think quickly and adapt seamlessly, all while working as a team and with other teams.

For a half century this College has a solid record for preparing the region's workforce for careers in business, healthcare and public service. And, of the 18,000 plus Rhodes State alumni, the vast majority call northwest Ohio their home—the place where they work, live and raise families.

The Borra Center for Health Sciences and the Emerging Workforce Innovation Center are exciting projects that will propel Rhodes State's students for years to come with spaces that are interactive; include state-of-the-art technology and simulation; and provide new paradigms of teaching and learning, including interdisciplinary learning opportunities that meet today's demands and tomorrow's emerging requirements. Just as when this College was established, people are coming together, daring to plan and dream of the future we can provide for our students, communities and region.

When I became president, I said, "I have poured my heart and soul into this institution." It's true. I believe in its students, its faculty, its staff and the people in the wonderful communities we serve. Thank you for all we have done together and for all we will continue to accomplish together.

Warmest regards,



Cynthia E. Spiers, PhD
President



*I chose Rhodes State College
due to the outstanding support of
staff and the excellent education.*



*I discovered my passions involved caring
for the elderly and making a healthy impact on others.
My love for nursing grew. Rhodes State College has empowered
me to stay connected with the Lima community and my family.
My education has taught me to pursue new opportunities,
build from my past and thrive in the present.*

Faith Johnson
2017 and 2018 Borra Scholarship Recipient
Nursing 2019
Mercy Health – St. Rita's



EDUCATE

COLLABORATE

INNOVATE

